

Pilares			Nível (cm)
Nome	Seção (cm)	Elevação (cm)	
P1	15 x 30	0	350
P2	15 x 30	0	350
P3	15 x 40	0	350
P4	15 x 40	0	350
P5	15 x 40	0	350
P6	15 x 40	0	350
P7	15 x 40	0	350
P8	15 x 40	0	350
P9	15 x 30	0	350
P10	15 x 40	0	350
P11	15 x 40	0	350
P12	15 x 30	0	350
P13	15 x 40	0	350
P14	15 x 30	0	350
P15	15 x 30	0	350
P16	15 x 30	0	350
P17	15 x 30	0	350
P18	15 x 30	0	350
P19	15 x 30	0	350
P20	15 x 30	0	350
P21	15 x 30	0	350
P22	15 x 30	0	350
P23	15 x 30	0	350
P24	15 x 30	0	350
P25	15 x 40	0	350
P26	15 x 30	0	350
P27	15 x 30	0	350
P28	15 x 30	0	350
P29	15 x 30	0	350
P30	15 x 40	0	350
P31	15 x 40	0	350
P32	15 x 30	0	350
P33	15 x 30	0	350
P34	15 x 40	0	350
P35	15 x 30	0	350
P36	15 x 40	0	350
P37	15 x 40	0	350
P38	15 x 30	0	350
P39	15 x 40	0	350
P40	15 x 30	0	350
P41	15 x 30	0	350
P42	15 x 30	0	350
P43	15 x 40	0	350
P44	15 x 40	0	350
P45	30 x 30	0	350
P46	30 x 30	0	350
P47	30 x 30	0	350
P48	30 x 30	0	350
P49	30 x 30	0	350
P50	30 x 30	0	350
P51	30 x 30	0	350
P52	30 x 30	0	350
P53	15 x 40	0	350
P54	15 x 30	0	350
P55	15 x 30	0	350
P56	15 x 40	0	350
P57	30 x 30	0	350
P58	30 x 30	0	350
P59	30 x 30	0	350
P60	30 x 30	0	350
P61	30 x 30	0	350
P62	15 x 40	0	350
P63	15 x 30	0	350
P64	15 x 40	0	350
P65	15 x 40	0	350
P66	30 x 30	0	350
P67	30 x 30	0	350
P68	30 x 30	0	350
P69	30 x 30	0	350
P70	30 x 30	0	350
P71	30 x 30	0	350
P72	30 x 30	0	350
P73	15 x 30	0	350
P74	15 x 30	0	350
P75	15 x 40	0	350
P76	15 x 30	0	350
P77	15 x 40	0	350
P78	15 x 30	0	350
P79	15 x 30	0	350
P80	15 x 30	0	350
P81	15 x 30	0	350
P82	15 x 30	0	350
P83	15 x 30	0	350
P84	15 x 30	0	350
P85	15 x 30	0	350
P86	15 x 30	0	350
P87	15 x 30	0	350
P88	15 x 30	0	350
P89	15 x 30	0	350
P90	15 x 40	0	350
P91	15 x 40	0	350
P92	15 x 40	0	350
P93	15 x 30	0	350
P94	15 x 40	0	350
P95	15 x 30	0	350
P96	15 x 40	0	350
P97	15 x 30	0	350
P98	15 x 30	0	350
P99	15 x 30	0	350
P100	15 x 30	0	350
P101	15 x 40	0	350
P102	15 x 30	0	350
P103	15 x 30	0	350
P104	15 x 40	0	350
P105	15 x 40	0	350
P106	15 x 40	0	350
P107	15 x 30	0	350
P108	15 x 40	0	350
P109	15 x 30	0	350
P110	15 x 30	0	350
P111	15 x 30	0	350
P112	15 x 30	0	350

Vigas			Nível (cm)
Nome	Seção (cm)	Elevação (cm)	
V1	15x30	0	350
V2	15x30	0	350
V3	15x30	0	350
V4	15x30	0	350
V5	15x30	0	350
V6	15x30	0	350
V7	15x30	0	350
V8	15x30	0	350
V9	15x30	0	350
V10	15x30	0	350
V11	15x30	0	350
V12	15x30	0	350
V13	15x30	0	350
V14	15x30	0	350
V15	15x30	0	350
V16	15x30	0	350
V17	15x30	0	350
V18	15x30	0	350
V19	15x30	0	350
V20	15x30	0	350
V21	15x30	0	350
V22	15x30	0	350
V23	15x30	0	350
V24	15x30	0	350
V25	15x30	0	350
V26	15x30	0	350
V27	15x30	0	350
V28	15x30	0	350
V29	15x30	0	350
V30	15x30	0	350
V31	15x30	0	350
V32	15x30	0	350
V33	15x30	0	350
V34	15x30	0	350
V35	15x30	0	350
V36	15x30	0	350
V37	15x30	0	350
V38	15x30	0	350
V39	15x30	0	350
V40	15x30	0	350
V41	15x30	0	350
V42	15x30	0	350
V43	15x30	0	350
V44	15x30	0	350
V45	15x30	0	350
V46	15x30	0	350
V47	15x30	0	350
V48	15x30	0	350
V49	15x30	0	350
V50	15x30	0	350
V51	15x30	0	350
V52	15x30	0	350
V53	15x30	0	350
V54	15x30	0	350
V55	15x30	0	350
V56	15x30	0	350
V57	15x30	0	350
V58	15x30	0	350
V59	15x30	0	350
V60	15x30	0	350
V61	15x30	0	350
V62	15x30	0	350

Características dos materiais	Ecs (kgf/cm²)
fck (kgf/cm²)	250
	238000

Legenda dos Pilares

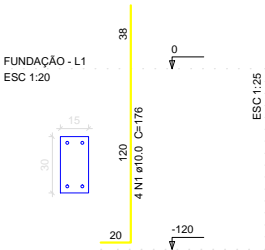
Pilar que morre

Pilar que passa

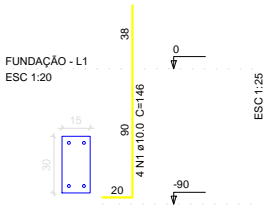
Pilar que nasce

Pilar com mudança de seção

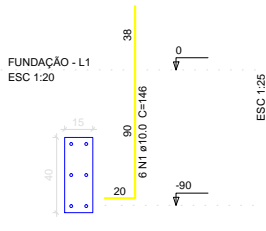
P1=P15=P17=P23=P27=P89=P93=P95=P102=P107



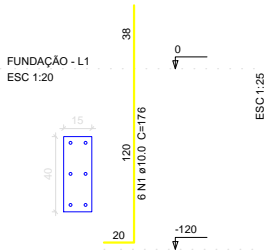
P2=P9=P16=P20=P22=P24=P28=P29=P32=P35
=P42=P55=P64=P78=P81=P82=P84=P86=P97
=P98=P112



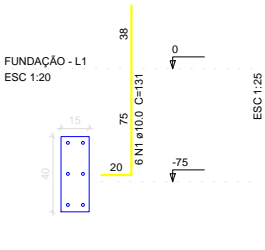
P3=P5=P6=P10=P31=P33=P34=P36=P43=P45
=P53=P56=P75=P77=P90



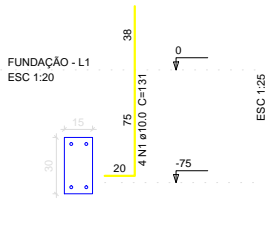
P4=P7=P11=P37=P62=P101=P105



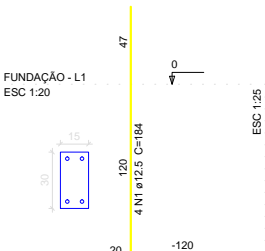
P8=P13=P25=P39=P65



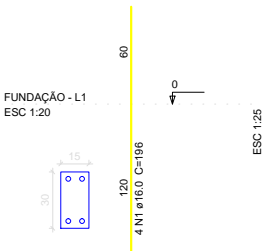
P12=P19=P38=P41=P73=P74=P76=P79=P80=P83
=P85=P109=P110



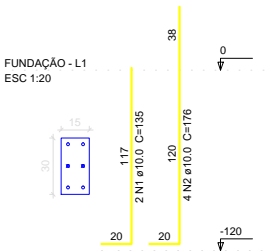
P14=P88



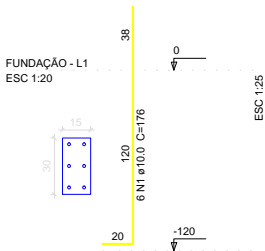
P18



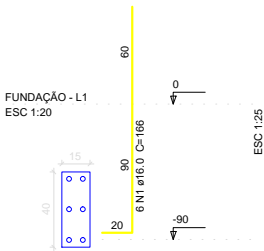
P21=P54



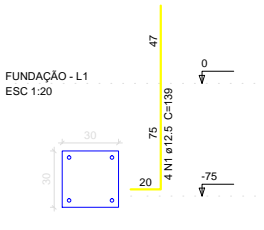
P26=P99



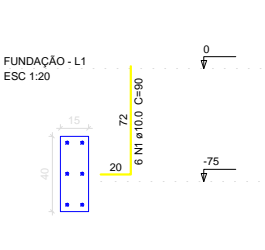
P30



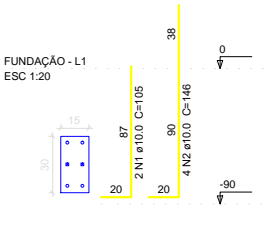
P46=P47=P48=P49=P50=P51=P52=P58=P59=P60
=P61=P66=P67=P68=P69=P70=P71=P72



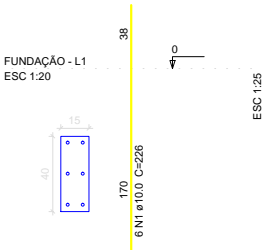
P63



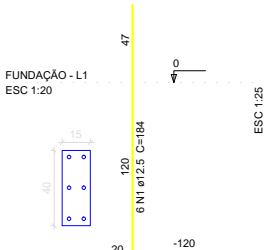
P87



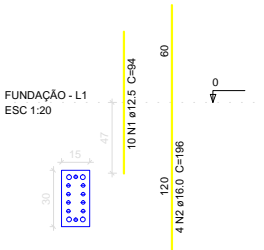
P91=P104=P106=P108



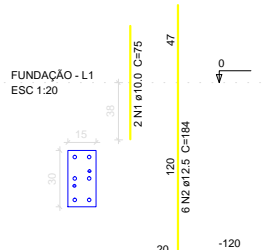
P92=P94=P96



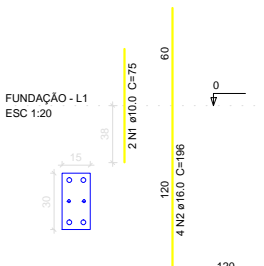
P100



P103



P111



Relação do aço

ELEMENTO	AÇO	N	DIAM	Q	UNIT (cm)	C.TOTAL (cm)
10xP1	CA50	1	10.0	40	176	7040
21xP2	CA50	1	10.0	84	146	12264
15xP3	CA50	1	10.0	90	146	13140
7xP4	CA50	1	10.0	42	176	7392
5xP8	CA50	1	10.0	30	131	3930
13xP12	CA50	1	10.0	52	131	6812
2xP14	CA50	1	12.5	8	184	1472
P18	CA50	1	16.0	4	196	784
2xP21	CA50	1	10.0	4	135	540
	CA50	2	10.0	8	176	1408
2xP26	CA50	1	10.0	12	176	2112
P30	CA50	1	16.0	6	166	996
18xP46	CA50	1	12.5	72	139	10008
P63	CA50	1	10.0	6	90	540
P87	CA50	1	10.0	2	105	210
	CA50	2	10.0	4	146	584
4xP91	CA50	1	10.0	24	226	5424
3xP92	CA50	1	12.5	18	184	3312
P100	CA50	1	12.5	10	94	940
	CA50	2	16.0	4	196	784
P103	CA50	1	10.0	2	75	150
	CA50	2	12.5	6	184	1104
P111	CA50	1	10.0	2	75	150
	CA50	2	16.0	4	196	784

Resumo do aço

AÇO	DIAM	C.TOTAL (m)	PESO (kg)
CA50	10.0	617	380.4
	12.5	168.4	162.2
	16.0	33.5	52.8
PESO TOTAL			
CA50		595.4	



PREFEITURA MUNICIPAL DE
VÁRZEA GRANDE

amar - cuidar - acreditar

PREFEITURA MUNICIPAL DE VÁRZEA GRANDE

Av. Castelo Branco, Espaço Municipal, 2500 - Centro Sul, Várzea Grande/MT
CEP 78125-700 - Fone/Fax: 65 3688 8000

PROJETO:

CRECHE DO IDOSO

LOCALIZAÇÃO:

Avenida Presidente Arthur Bernardes s/n
Bairro:Ipase - Várzea Grande - MT

ASSUNTO:

FUNDAÇÃO - DETALHES DOS PILARES DAS BALDRAMES

AUTORES DO PROJETO:

AUREO EMANOEL DA SILVA
CREA: MT042435